

RECOMMENDED INSTALLATION

i-Wob®2

COMPONENT ASSEMBLY



UP3 NOZZLES
 #6 - #26
 UP3NZ06 - UP3NZ26
 (Depending on deflector)

BRACKET ASSEMBLY

Standard Angle 6-Groove
 (Grey deflector)
 IWOB2xxB3SA6UP3

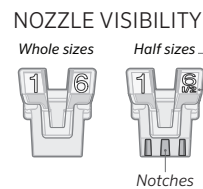
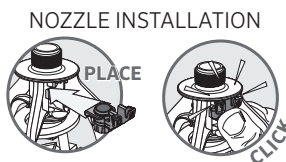
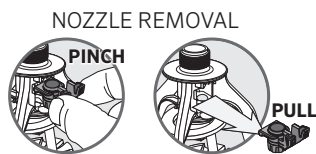
Standard Angle 9-Groove
 (Black deflector)
 IWOB2xxB3UP3

Low Angle 9-Groove
 (Blue deflector)
 IWOB2xxB3LA9UP3

Low Angle 6-Groove
 (White deflector)
 IWOB2xxB3LAUP3

**UNIVERSAL
 MAGNUM WEIGHT™**
 0.85 lbs (0.39 Kg)
 UNIMAGWGT
 (Includes i-Wob connector)

If using the Universal Magnum Weight, always be sure the weight is tightly threaded into the bottom of the i-Wob2. 140 inch-lbs torque recommended.

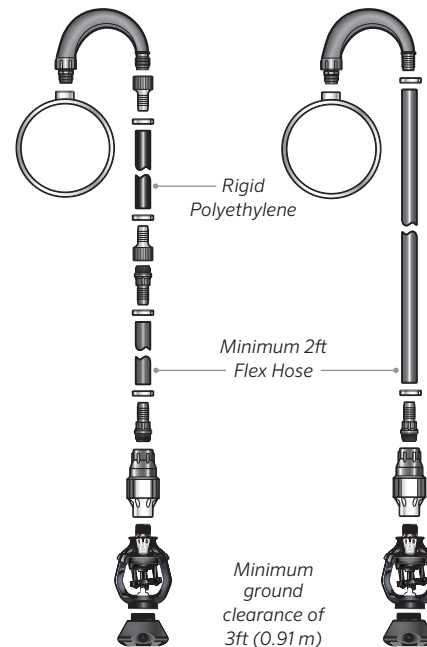


Installation Specifications

I-WOB2 SYSTEM ASSEMBLY

- Always mount the i-Wob2 on a minimum of 2 ft (0.6 m) reinforced flexible hose. The hose must be on the outlet end of any semi-rigid or rigid drop.*
- Mount the i-Wob2 no less than 3 ft (0.91 m) above the ground.
- When using the Senninger Universal Magnum or One Weight, always be sure it is tightly threaded to the bottom of the i-Wob2. (140 inch-lbs torque recommended)
- If using a conventional drop weight above the i-Wob2, it should be a threaded weight of at least 1.5 lbs (0.7 kg), and should not exceed 1 ft (0.38 m) in length. A slip-over drop weight may cause premature failure of the drop tube assembly. Never combine weights above and below the i-Wob2.

* If using Senninger's thermoplastic goosenecks, a minimum of 2 ft (0.6 m) of flexible hose should be used on the outlet end of any semi-rigid or rigid drop. In high canopy crops, consider applicator height.



PRESSURE REGULATOR LOCATION

- Pressure regulators can be installed at the top of the drop or near the applicator.
- Follow your customized print out for proper pressure regulator placement.

I-WOB2 SYSTEM DESIGN CRITERIA	Standard Angle (Grey) 6-Groove Small Droplets	Standard Angle (Black) 9-Groove Medium Droplets	Low Angle (Blue) 9-Groove Medium Droplets	Low Angle (White) 6-Groove Large Droplets
Nozzle Sizes*				
at 6 psi ** (0.41 bar)	#12 - 26 3/16" - 13/32" (4.76 - 10.32 mm)	#12 - 26 3/16" - 13/32" (4.76 - 10.32 mm)	#12 - 26 3/16" - 13/32" (4.76 - 10.32 mm)	#12 - 26 3/16" - 13/32" (4.76 - 10.32 mm)
at 10 - 15 psi (0.69 - 1.03 bar)	#10-26 5/32" - 13/32" (3.97 - 10.32 mm)	#6-26 3/32" - 13/32" (2.38 - 10.32 mm)	#6-26 3/32" - 13/32" (2.38 - 10.32 mm)	#12-26 3/16" - 13/32" (4.76 - 10.32 mm)
Flows				
at 6 psi (0.41 bar)	2.51 - 18.35 gpm (570 - 4168 L/hr)	2.51 - 18.35 gpm (570 - 4168 L/hr)	2.51 - 18.35 gpm (570 - 4168 L/hr)	2.51 - 18.35 gpm (570 - 4168 L/hr)
at 10-15 psi (0.69 - 1.03 bar)	2.24 - 18.35 gpm (509 - 4168 L/hr)	0.8 - 18.35 gpm (182 - 4168 L/hr)	0.8 - 18.35 gpm (182 - 4168 L/hr)	3.24 - 18.35 gpm (736 - 4168 L/hr)
Diameters				
3 ft (0.91 m) height at 6 psi (0.41 bar)	26 - 30 ft (8.0 - 9.1 m)	30 - 34 ft (9.1 - 10.4 m)	28 - 30 ft (8.5 - 9.1 m)	28 - 32 ft (8.5 - 9.8 m)
3 ft (0.91 m) height at 10 - 15 psi (0.69 - 1.03 bar)	36 - 46 ft (11.0 - 14.0 m)	31 - 53 ft (9.5 - 16.2 m)	31 - 47 ft (9.5 - 14.3 m)	40 - 49 ft (12.2 - 14.9 m)
6 ft (1.83 m) height at 6 psi (0.41 bar)	30 - 34 ft (9.1 - 10.4 m)	36 - 42 ft (11.0 - 12.8 m)	32 - 35 ft (9.8 - 10.7 m)	32 - 39 ft (9.8 - 11.9 m)
6 ft (1.83 m) height at 10 - 15 psi (0.69 - 1.03 bar)	35 - 50 ft (10.7 - 15.2 m)	34 - 57 ft (10.4 - 17.4 m)	35 - 50 ft (10.7 - 15.2 m)	44 - 53 ft (13.4 - 16.2 m)
9 ft (2.74 m) height at 6 psi (0.41 bar)	34 - 36 ft (10.4 - 11.0 m)	40 - 46 ft (12.2 - 14.0 m)	36 - 42 ft (11.0 - 12.8 m)	34 - 44 ft (10.4 - 13.4 m)
9 ft (2.74 m) height at 10 - 15 psi (0.69 - 1.03 bar)	36 - 52 ft (11.0 - 15.8 m)	38 - 59 ft (11.6 - 18.0 m)	39 - 55 ft (11.9 - 16.8 m)	49 - 57 ft (14.0 - 17.4 m)
Maximum Spacing***				
at 6 ft (1.8 m) ground clearance	10 ft (3 m)	10 ft (3 m)	10 ft (3 m)	10 ft (3 m)
at 9 ft (2.74 m) ground clearance	18 ft (5.5 m)	20 ft (6.1 m)	18 ft (5.5 m)	15 ft (4.6 m)
Pressure at the Nozzle				
Minimum	6 psi (0.41 bar)	6 psi (0.41 bar)	6 psi (0.41 bar)	6 psi (0.41 bar)
Maximum	15 psi (1.03 bar)	15 psi (1.03 bar)	15 psi (1.03 bar)	15 psi (1.03 bar)

* It is recommended that larger nozzle sizes be used only on soils that can handle higher application rates.

** 10 psi (0.69 bar) is preferred, however, 6 psi (0.41 bar) can be used for nozzles #12 and larger.

*** For optimum performance, Senninger recommends the use of maximum spacing for 1-2 spans only. Note: Always mount the i-Wob2 on a minimum of 2 ft (0.6 m) reinforced flexible hose. The hose must be on the outlet end of any semi-rigid or rigid drop. Keep i-Wob2s above crop canopy when outlet spacing exceeds 10 ft (3.0 m). This is especially important on high profile crops.