

RECOMMENDED INSTALLATION OF SENNINGER®

Goosenecks

MODELS

180-DEGREE SINGLE

3/4" M NPT inlet incl Nipple x 3/4" Barb outlet
GNAP180X6B (shown)

3/4" M NPT inlet incl Nipple x 3/4" M NPT outlet
GNAP180X6M

3/4" F NPT inlet x 3/4" Barb outlet
GN180X6B

3/4" F NPT inlet x 3/4" M NPT outlet
GN180X6MB

3/4" F NPT inlet x 19 mm Barb outlet
GN180X6B1 (grey)

Option for use with F NPT inlet model Goosenecks

STAINLESS STEEL NIPPLE

3/4" M NPT inlet x 3/4" M NPT outlet
FTN33SS (shown)



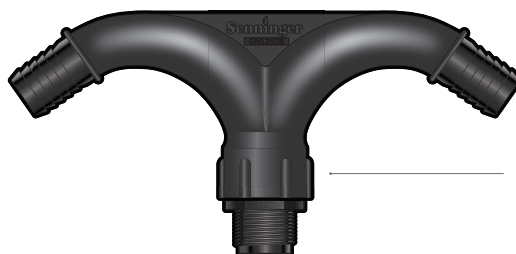
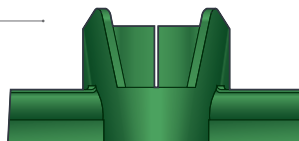
For all of the 125-degree model Goosenecks, the use of Truss Rod Hose Slings is recommended.

TRUSS ROD HOSE SLINGS

For 5/8" truss rod **TRHS625** (rust) For 13/16" truss rod **TRHS812** (grey)

For 11/16" truss rod **TRHS687** (green) For 7/8" truss rod **TRHS875** (blue)

For 3/4" truss rod **TRHS759** (black)



125-DEGREE SINGLE

3/4" M NPT inlet incl Nipple x 3/4" Barb outlet
GNAP125SB (shown)

3/4" M NPT inlet incl Nipple x 3/4" M NPT outlet
GNAP125SM

3/4" F NPT inlet x 3/4" Barb outlet
GN125SB

3/4" F NPT inlet x 3/4" M NPT outlet
GN125SM

125-DEGREE DOUBLE

3/4" M NPT inlet incl Nipple x 3/4" Barb outlet
GNAP125DB (shown)

3/4" M NPT inlet incl Nipple x 3/4" M NPT outlet
GNAP125DM

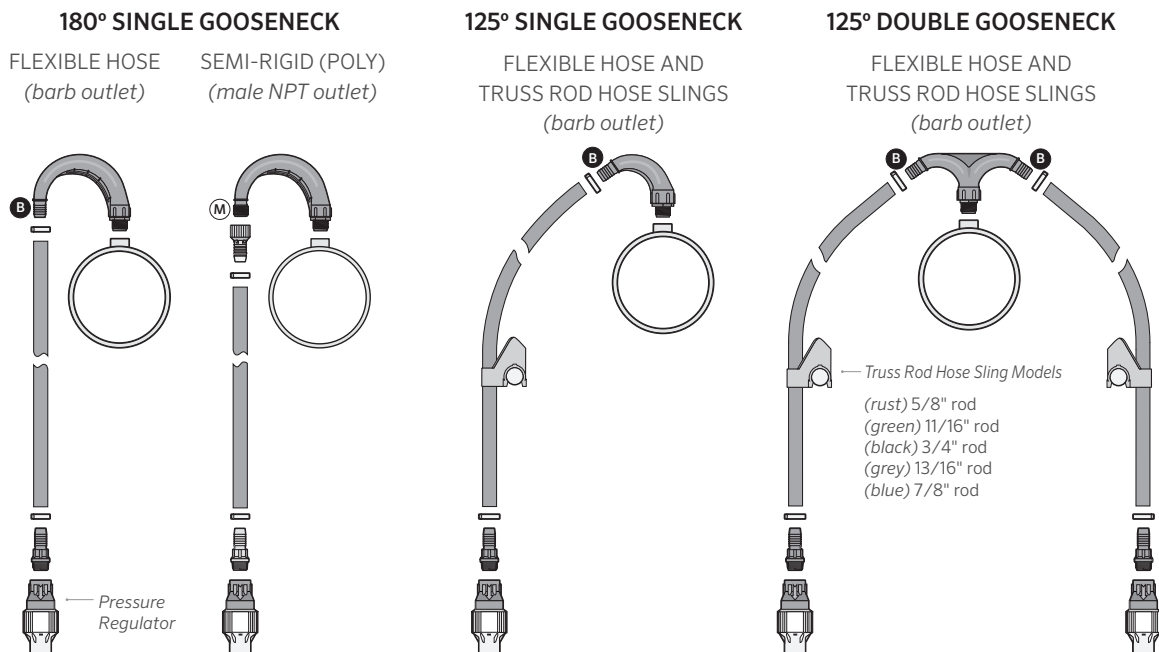
3/4" F NPT inlet x 3/4" Barb outlet
GN125DB

3/4" F NPT inlet x 3/4" M NPT outlet
GN125DM

Installation Specifications

- If using a sealant, use only Teflon tape.
- For female NPT inlet models, attach Gooseneck to the mainline using a Stainless steel nipple or the Senninger® impact-modified thermoplastic nipple. PVC not recommended.
- Thread the Gooseneck by hand into the mainline. **Do not over-tighten** and use caution to avoid cross-threading.
- If slight unthreading is required to adjust position, use the nipple hex area and not the Gooseneck.
- Be sure to employ the correct-sized hose clamps to secure the hose drops to the Gooseneck.
- If using semi-rigid or rigid drops, they should be no longer than 1 ft (0.38 m) below the truss rod.

GOOSENECK INSTALLATION OPTIONS



TRUSS ROD HOSE SLINGS INSTALLATION

- Be sure to employ Truss Rod Hose Slings with all 125-degree model Goosenecks.
- Insert the drop hose through the opening on the Truss Rod Hose Sling before adding the pressure regulator or sprinkler. If the sprinkler is already on the drop hose, gently open the seam on the back of the Truss Rod Hose Sling and slide the hose into the opening.
- Once the hose is through the hole in the Truss Rod Hose Sling, snap the bottom trough into the desired position onto the truss rod.

Contact the Senninger® product Technical Support department with any questions.