

### RECOMMENDED INSTALLATION OF THE SENNINGER®

# Super Spray®

## COMPONENT ASSEMBLY

### SUPER SPRAY DEFLECTOR PADS

#### GROOVED:

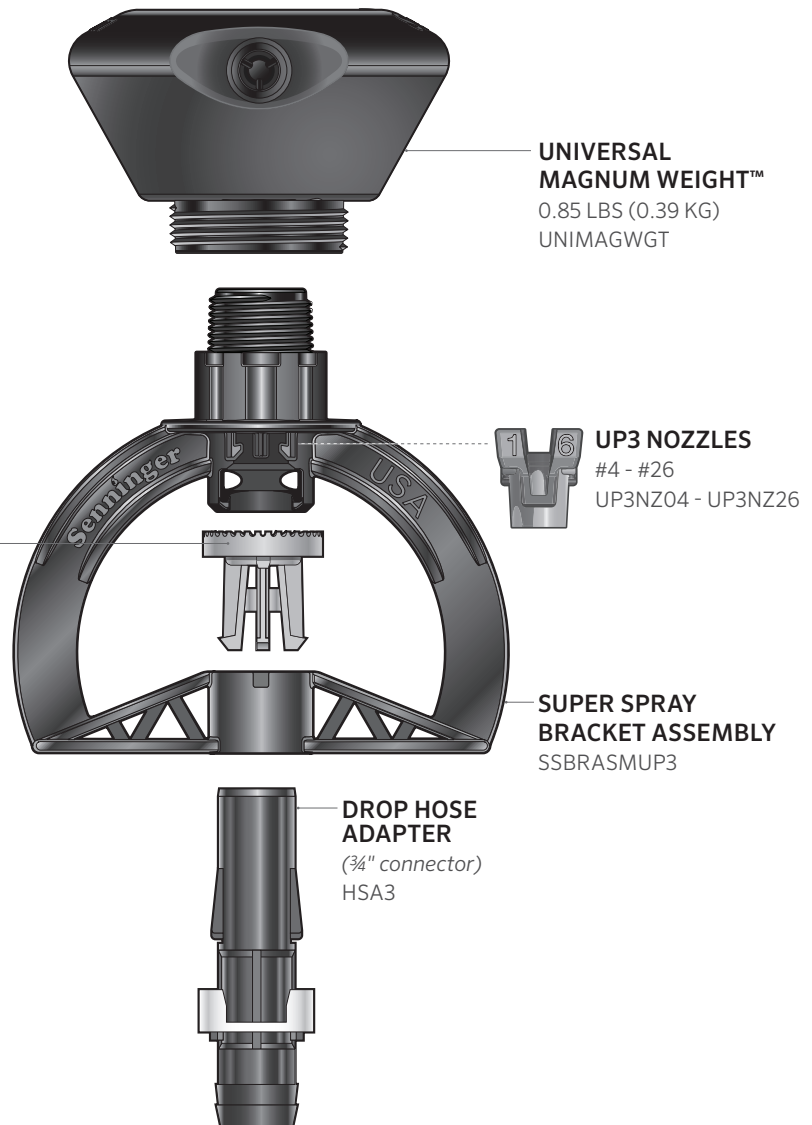
|                                 |           |
|---------------------------------|-----------|
| Flat 36 medium-groove (black)   | SSPFL36MG |
| Flat 24 deep-groove (black)     | SSPFL24DG |
| Flat 35 deep-groove (black)     | SSPFL36DG |
| Flat 48 deep-groove (black)     | SSPFL48DG |
| Concave 36 medium-groove (blue) | SSPCC36MG |
| Concave 24 deep-groove (blue)   | SSPCC24DG |
| Concave 36 deep-groove (blue)   | SSPCC36DG |
| Concave 48 deep-groove (blue)   | SSPCC48DG |
| Convex 36 medium-groove (green) | SSPCV36MG |
| Convex 24 deep-groove (green)   | SSPCV24DG |
| Convex 36 deep-groove (green)   | SSPCV36DG |
| Convex 48 deep-groove (green)   | SSPCV48DG |

#### SMOOTH:

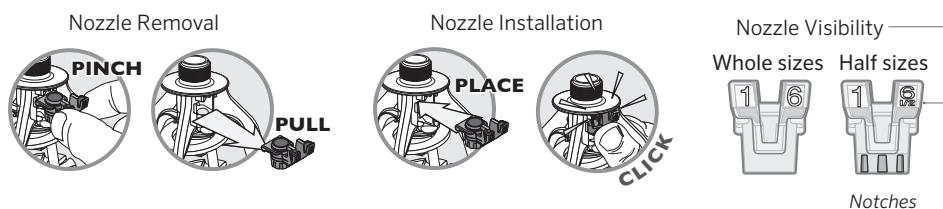
|                     |           |
|---------------------|-----------|
| Flat (black)        | SSPFL36MG |
| Flat mini (black)   | SSPMFLSM  |
| Concave (blue)      | SSPCCSM   |
| Concave mini (blue) | SSPMCCSM  |
| Convex (green)      | SSPCVSM   |
| Convex mini (green) | SSPMCVSM  |

#### COTTON & CORN

|                     |          |
|---------------------|----------|
| Cotton (white)      | SSPCOT   |
| Cotton mini (white) | SSPMCOT  |
| Corn (red)          | SSPCORN  |
| Corn mini (red)     | SSPMCORN |



## UP3 NOZZLE REMOVAL AND INSTALLATION



## Installation Specifications

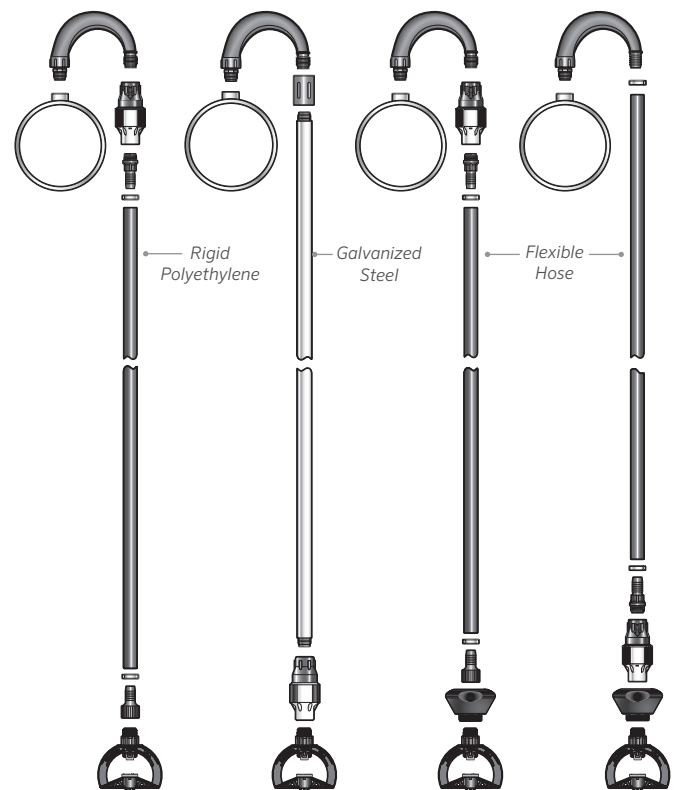
### SUPER SPRAY® SYSTEM ASSEMBLY

- The Super Spray can be mounted on rigid drops or flexible hose drops.
- When using flexible hose a weight is recommended.
- When using the Senninger Universal Magnum Weight, thread onto the LDN bracket base.
- Conventional slip over weights can be used with the Super Spray.
- Mount the Super Spray no less than 1.5 - 9ft (0.46 - 2.74 m) above ground.
- See the Senninger Gooseneck brochure for additional mounting options.

### PRESSURE REGULATOR LOCATION

- Pressure regulators can be installed at the top of the drop, or near the applicator.
- Always follow your customized printout for proper pressure regulator placement.

*NOTE: To maintain product warranty and maximize drop component life, refer to the information and diagrams.*



Minimum ground clearance of 1.5 - 9ft (0.46 - 2.74 m)

| SUPER SPRAY SYSTEM DESIGN CRITERIA | Flat (Black)          | Concave (Blue)        | Convex (Green)        |
|------------------------------------|-----------------------|-----------------------|-----------------------|
| <b>Nozzle Sizes</b>                |                       |                       |                       |
| Minimum                            | #04 1/16" (1.59 mm)   | #04 1/16" (1.59 mm)   | #04 1/16" (1.59 mm)   |
| Maximum*                           | #26 13/32" (10.32 mm) | #26 13/32" (10.32 mm) | #26 13/32" (10.32 mm) |
| <b>Flows</b>                       |                       |                       |                       |
| Minimum                            | 0.27 gpm (61 L/hr)    | 0.27 gpm (61 L/hr)    | 0.27 gpm (61 L/hr)    |
| Maximum                            | 30.0 gpm (6805 L/hr)  | 30.0 gpm (6805 L/hr)  | 30.0 gpm (6805 L/hr)  |
| <b>Maximum Spacing**</b>           |                       |                       |                       |
| at 6 ft (1.8 m) ground clearance   | 10 ft (3 m)           | 10 ft (3 m)           | 10 ft (3 m)           |
| <b>Pressure at the Nozzle</b>      |                       |                       |                       |
| Minimum                            | 6 psi (0.41 bar)      | 6 psi (0.41 bar)      | 6 psi (0.41 bar)      |
| Maximum                            | 40 psi (2.76 bar)     | 40 psi (2.76 bar)     | 40 psi (2.76 bar)     |

\* It is recommended that larger nozzle sizes be used only on soils that can handle higher application rates.

\*\* For optimum performance, Senninger recommends the use of maximum spacing for 1-2 spans only.